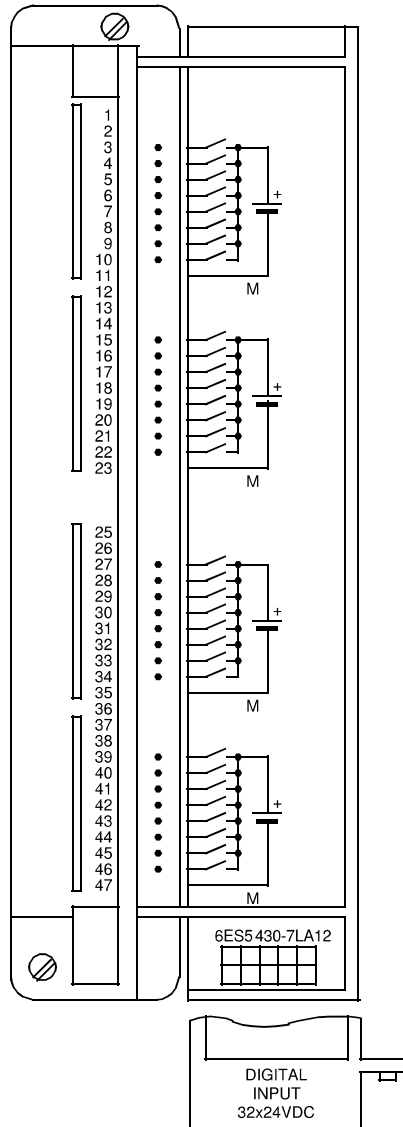


Digital Input Module 32 x 24 V DC, Floating

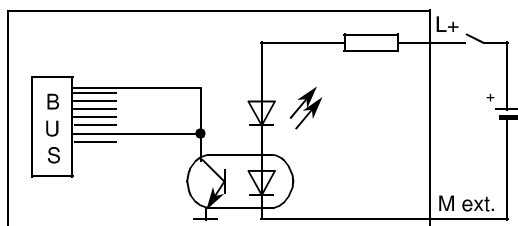
(6ES5 430-7LA12)



Technical Specifications

Number of inputs		32
Galvanic isolation		yes (optocoupler)
- in groups of		8
Input voltage L+		
- rated value		24 V DC
- for "0" signal		-30 to +5 V
- for "1" signal		13 to 30 V
Input current		
- for "1" signal	typ.	8.5 mA
Delay time		
- from "0" to "1"	typ.	2.2 msec.;
	max.	4.6 msec.
- from "1" to "0"	typ.	4.5 msec.;
	max.	12 msec.
Cable length		
- shielded	max.	1000 m (3281 ft.)
- unshielded	max.	600 m (1969 ft.)
Isolation rating		
		according to VDE 0160
Rated isolation voltage (between groups)		
		30 V
- isolation group		C
- tested at		500 V
Rated isolation voltage (L+ to \perp)		
		30 V
- isolation group		C
- tested at		500 V
Connection of 2-wire BERO proximity switches		
		possible
- quiescent current		1.5 mA
Current consumption		
- from 5 V (internal)		5 mA
Power losses of the module		
	typ.	6.5 W
Weight		
	approx.	0.7 kg (1.54 lb.)

Terminal Assignment



Simplified Schematic